



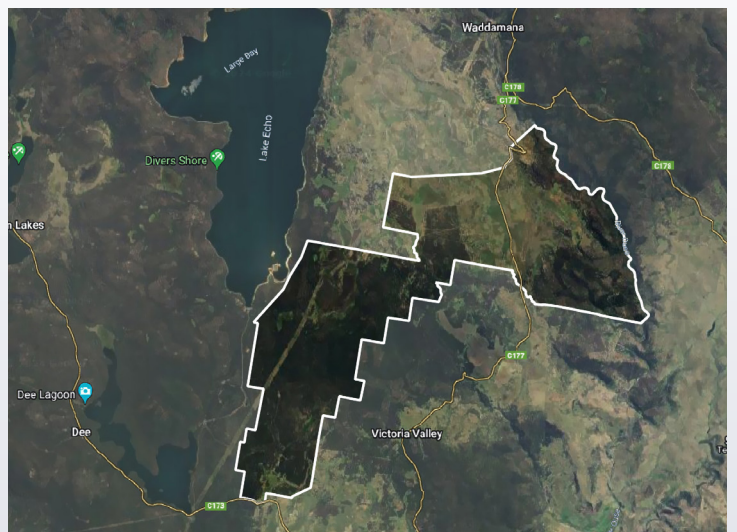
New renewable energy project for the Central Highlands

Goldwind Australia is exploring the development of its second wind farm in Tasmania's Central Highlands, called Bashan Wind Farm Pty Ltd (BWF).

Over the previous five years in the successful delivery of wind farms in Tasmania, Goldwind Australia has worked cooperatively with the local community, in learning a lot about the environment, including pioneering the application of IdentiFlight technology to protect Tasmanian Wedge-Tailed Eagles and establishing successful programs for the management of protected flora and fauna.

Project Area

The BWF is located on forestry and farming land, and is named after Bashan Plains on which the northern part of the BWF (Bashan North) is sited. The heavily forested Bashan Road forms the eastern boundary and the southern part of the wind farm (Bashan South) extends down through Victoria Valley, where Victoria Valley Road forms the southern boundary. The western boundary of the project area adjoins forestry land which extends from the southern end of Lake Echo to the northern end of Dee Lagoon.



Goldwind considers the area to be highly suitable for wind farm development, for the same reasons as its previous project, the Cattle Hill Wind Farm, these include:

Compatible land use: The Waddamana area has been used for renewable energy generation for many decades. Surrounding infrastructure includes hydroelectric lakes and dams, Lake Echo Power Station, the Waddamana power station museum and Waddamana Power Trail.

Existing infrastructure: TasNetworks transmission lines cross through the centre of Bashan South, which means no additional overhead lines are needed to connect the wind farm to the electricity network. A network of forestry roads already exists within the site, and several quarries the project may utilise to extend and widen these roads.

Seclusion from houses: Due to the remoteness of the area, and surrounding forest on all sides, the BWF will not be highly visible from public roads or highways.

Manageable environmental impacts: Most of the site lies within existing forestry areas which have been previously disturbed and are extensively modified. Areas of remnant vegetation and protected habitat are being excluded from the infrastructure footprint during layout development.

Project Description

Initial assessments indicate the site could host between 50 to 60 wind turbines and generate over 400 MW of clean energy – enough to power over 60,000 homes. Four turbine models of between 6.0 MW to 8.0 MW nameplate capacity are being assessed for suitability, which each have a 130-metre hub height, and rotor blades of between 82m – 92m. These larger turbines significantly reduce the number of hardstands and turbine foundations required to construct the project.

Protection of the Environment

Though extensively modified, assessment of the site to date has identified opportunities to exclude habitat for protected species and protected flora and vegetation communities from the project footprint and protect them in perpetuity. Initiatives being explored include:

- Miena Cider Gum reserve
- Highland Poa reserve/covenant.

If found to be suitable, the Highland Poa reserve/covenant could offer ongoing protection for Brown Butterfly, Liawanee Greenhood (orchid), and other protected flora. Mitigation measures for eagles, including a next generation version of the IdentiFlight system

will be utilised to effectively reduce eagle mortalities. Successful programs for quolls, devils, and wombats from our previous wind farm, including treatment of mange will also be applied to ensure protection and management of these species.

Project Status

The project is in development now and is seeking community feedback as part of the process of developing the layout. Detailed studies are underway including flora and fauna, heritage, noise and visual impact, and traffic and transport studies.

Once the necessary studies are complete and a layout finalised, a Development Application will be submitted to EPA Tasmania incorporating an Environmental Impact Statement (EIS) and Planning Permit application to Central Highlands Council. The BWF has been voluntarily nominated as a controlled action under the Environment Protection and Biodiversity Act 1999 and will be subject to assessment at the Commonwealth Level under the Bilateral Agreement between DCCEE and EPA.

If approved, BWF will bring new opportunities to the people of the Central Highlands region, including a significant community benefits package which will be developed in consultation with the local community.

Who is Goldwind?

A global leader in the manufacturing and installation of wind turbines, with wind farms covering six continents. Goldwind Australia has offices in Sydney and Melbourne, and since establishment in 2009, has added 2 GW of wind power generation to the Australian grid.



Community Consultation

The project team will be attending public events and hosting information sessions, where you'll be able to talk with members of our team, ask questions and influence the project design yourself.

We look forward to hearing your thoughts, ideas or concerns. Please check the project website (www.bashanwindfarm.com) for upcoming events, or request an in-person consultation via info@bashanwindfarm.com and we will come to you!